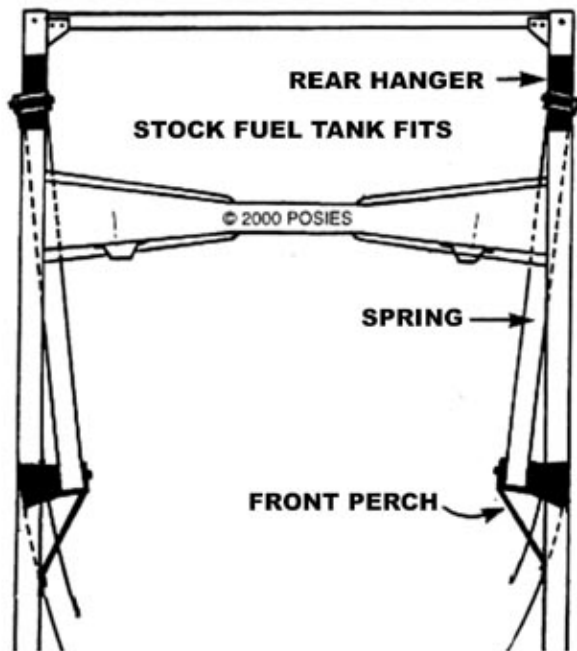


1935-40 FORD 2 POSITION ADJUSTABLE BOLT ON REAR KIT

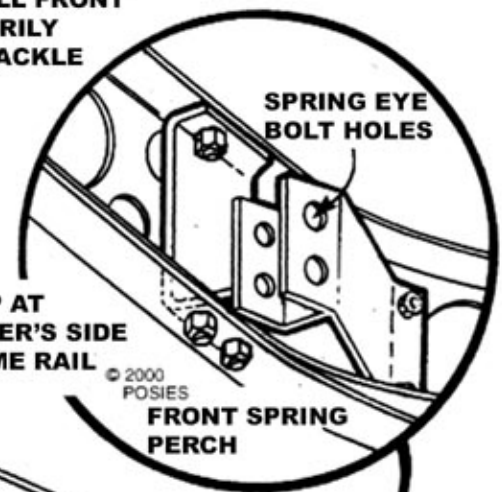
**POSIES
SUPER SLIDE SPRINGS
AND
HOT ROD PARTS**

219 N. Duke Street Hummelstown, PA 17036
Phone 717.566.3340 Fax 717.566.5440



TOP VIEW OF FRAME LOOKING TOWARDS REAR

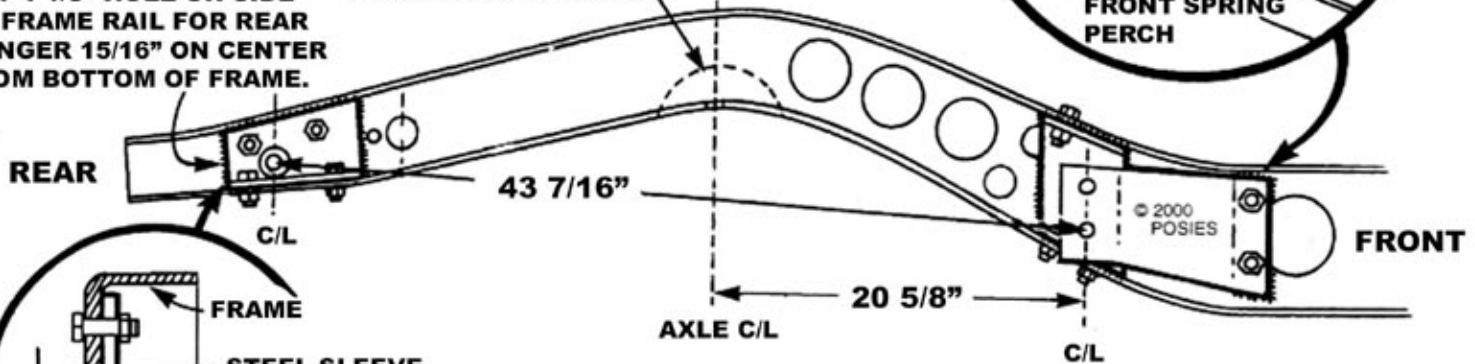
TIP: TO DETERMINE ANGLE OF REAR HANGER, INSTALL FRONT PERCH AND TEMPORARILY BOLT SPRING AND SHACKLE IN PLACE



LOOKING UP AT INSIDE DRIVER'S SIDE BOXED FRAME RAIL

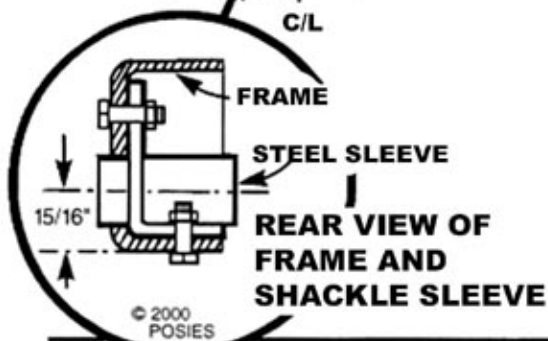
CUT 1 1/8" HOLE ON SIDE OF FRAME RAIL FOR REAR HANGER 15/16" ON CENTER FROM BOTTOM OF FRAME.

C-NOTCHING THE FRAME IS NECESSARY



INSIDE OF DRIVER'S SIDE FRAME RAIL

TORQUE FRONT SPRING PERCH BOLTS TO 65 LBS.



NOTE:

- MAKE SURE THAT THE FRAME IS LEVEL AND SQUARE
- THE MOUNTING BRACKETS MUST BE FULLY WELDED BEFORE FINAL INSTALLATION

KIT INCLUDES:

- | | |
|-------------------------------------|--|
| (2) FRONT SPRING PERCHES & HARDWARE | (2) REAR SHACKLE BRACKETS AND HARDWARE |
| (2) FRONT SPRING BOLT & LOCK NUT | (2) SHACKLES |
| (4) U-BOLTS & NUTS | (2) LOWER SHOCK MOUNTS |
| (2) LOWER U-BOLT PLATES | (2) SUPERSLIDE SPRINGS |

IMPORTANT:

MAKE SURE THAT YOU TIGHTEN THE SHACKLE NUTS SO THAT THE LAST THREAD IS PAST THE NUT. YOUR SHACKLE BUSHINGS WILL THEN LAST MANY MILES AND WORK CORRECTLY. OVER TIGHTENING OF THE SHACKLE NUTS AND FRAME MOUNT BOLT MAY RESULT IN A COMPROMISED RIDE QUALITY.

